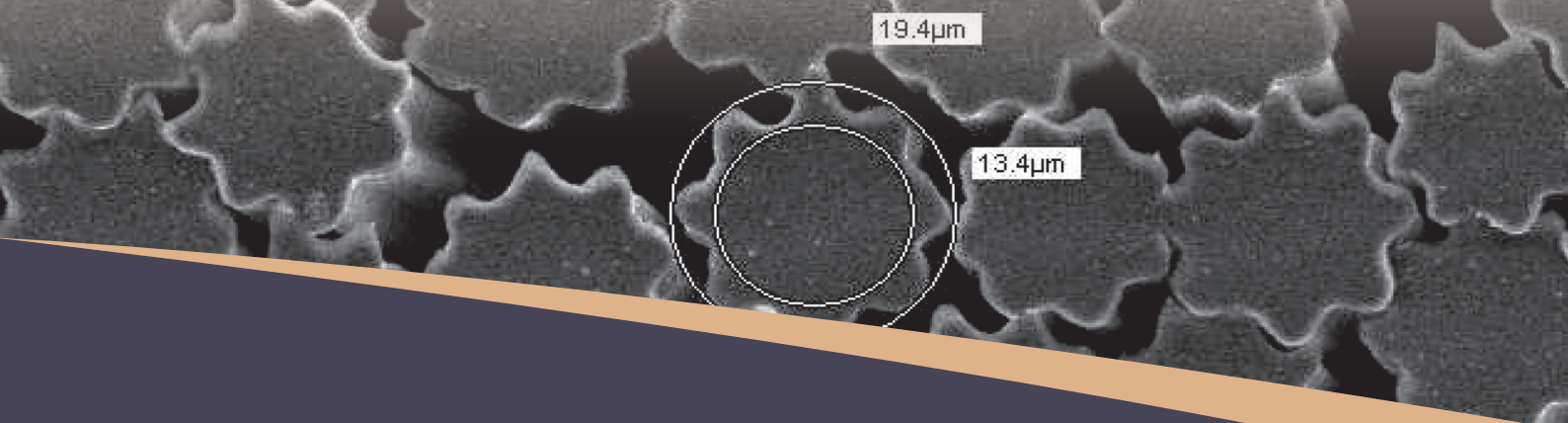
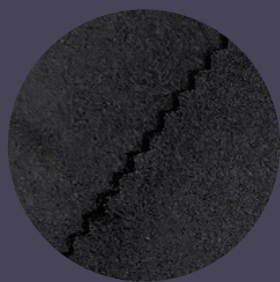


Super Matte®

EXCEPTIONAL CHAINRINGS CROSS-SECTION YARN



Advantages



S31948

Spec: 185 x 145 x 58" x 51 GSM

Finish: CD DWR

Yarn: 30D*30D

Composition: 100% Recycled Polyester

Remark: UPF 50+



S31947

Spec: 205 x 157 x 58" x 54 GSM

Finish: Wicking

Yarn: 30D*30D

Composition: 100% Recycled Polyester

Remark: UPF 50+



S31947

Spec: 205 x 157 x 58" x 54 GSM

Finish: Wicking + Digital Print

Yarn: 30D*30D

Composition: 100% Recycled Polyester

Remark: UPF 50+

Features



Anti UV performance

Achieving a UPF 50+ through the yarn, reducing the use of chemicals.



Maximize moisture-wicking efficiency
Keep dry and comfortable for any activity.



Soft & delightful fabric hand feel
Ensuring comfort for the wearer, and fine touch to the skin.



Super dull

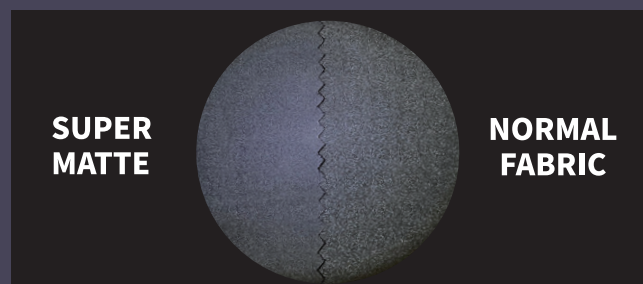
By flashing a light to fabric, you'll notice a perfectly dull surface.



Available in recycle version

Meet your needs with sustainable options.

Shine a light on me



**SUPER
MATTE**

**NORMAL
FABRIC**